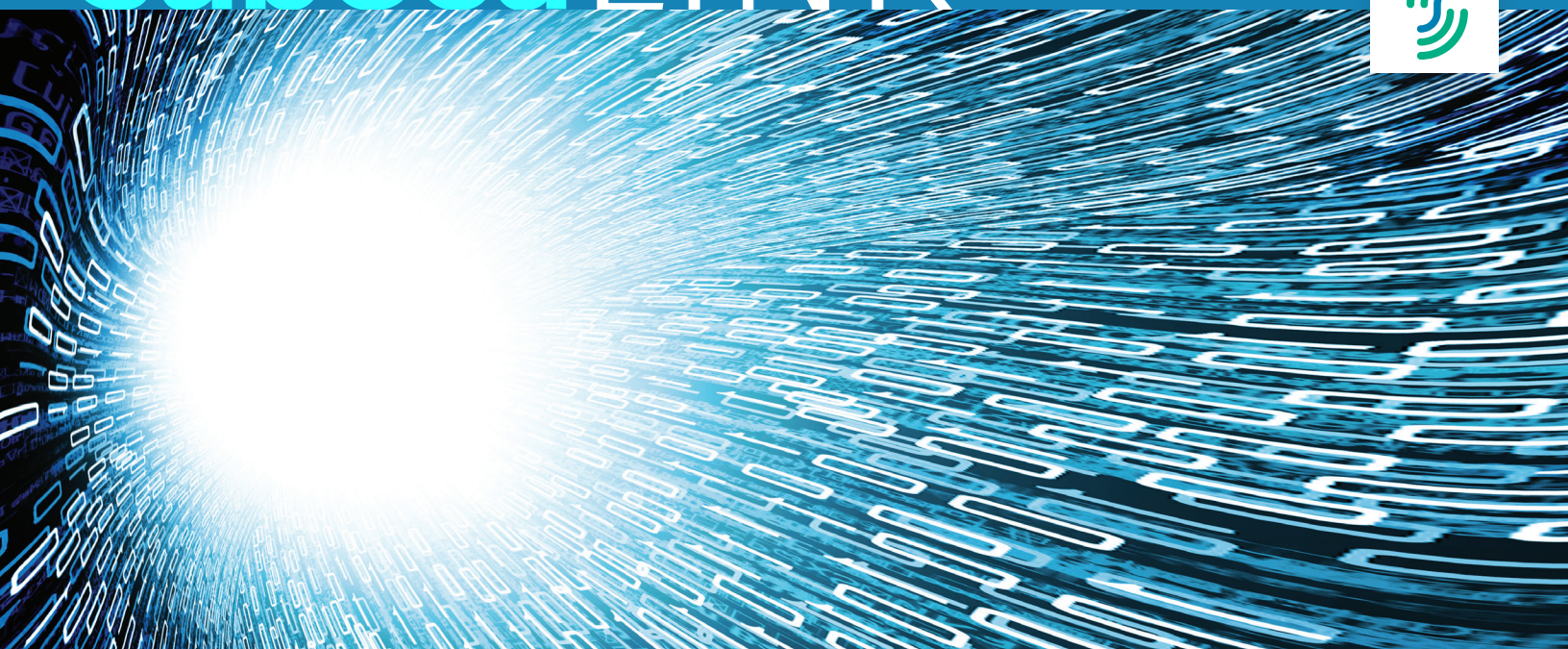


genius water management

subeca LINK



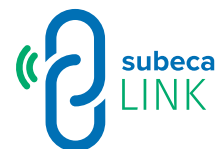
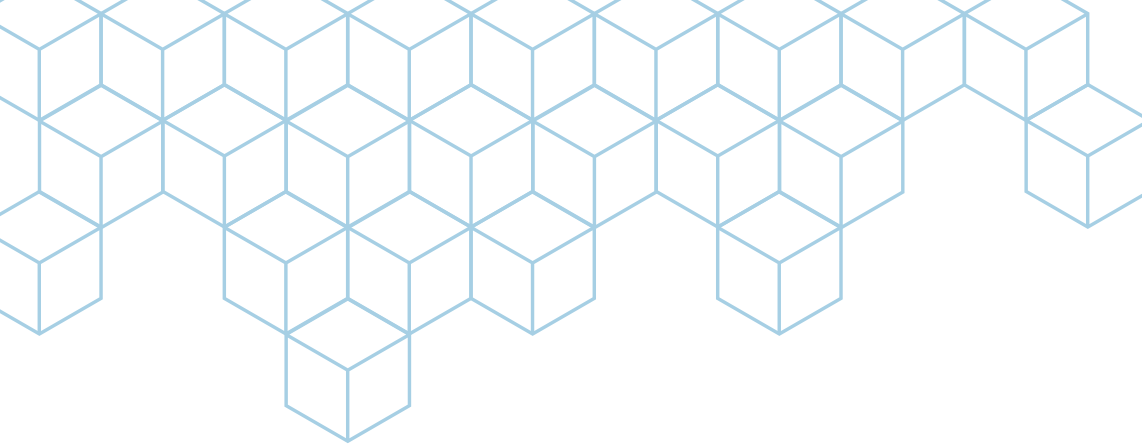
The Subeca Link combines Bluetooth and LoRa wireless standards to deliver **subecaAMiOT™**

Combining the value of AMI with the flexibility and scalability of IoT, the Subeca Link allows water utilities to reap the huge benefits of hardened, high-security open networks.

Subeca Link is the central hub for directing Subeca Pin data to the Subeca Engage Platform. Subeca Link can also receive commands from Subeca Engage, including instructions to Subeca Act valves to shut off or turn on water. Subeca Link is a versatile IoT hub that, while supporting Subeca Series products such as Subeca Pins, also communicates to any water meter with a pulsed output or direct encoder read.

Each Subeca Link can communicate with up to five Subeca Pins and control up to four Subeca Act valves.





subecaAMiOT™

INSTALLATION SPECIFICATIONS

Subeca Link operates over dual networks. At the local environment, the Subeca Edge network provides a high-speed, high-granularity blanket of data. For cloud-based services, less frequent data is transported over long-range LoRaWan networks. Combined, these networks provide the Subeca AMiOT foundation on which the Subeca Series Water Management System operate.

Dimensions: 4.58" x 3.94"

Lid or can installation

Installs in less than 10 minutes

Sealed for IP68 (water ingress)

Bluetooth or wired options: With 2 separate driver circuits, Subeca Link can communicate with both 2-wire and 3-wire valves simultaneously.

Pulsed-input connection allows communication to many OTS water meters



FEATURES AND OPERATION

Onboard meter/valve drivers

Two-way communications capable

LoRaWan-enabled

Battery-powered, 15+ year life

LoRa protocol uses Bluetooth Low Energy (BLE) as core platform for short-range communications with Subeca Pin, Subeca Act valve and compatible third-party valves, flow sensors and meters.

Secure – Meets stringent ISO/IEC 27001 requirements for wireless information management

Transmits water use data to agencies and consumers in near-real time (every 900 milliseconds)

Can relay remote instructions to open or close a valve.

Can connect up to three external devices

ADVANTAGES & BENEFITS

- » Fully remote operation, no field calls required
- » Long range, multi-IoT app functionality allows Subeca Link to establish the foundations of a robust Smart City network
- » Provides agency access to water use data through Subeca Engage Dashboard software, to help conserve water
- » A communications hub for Subeca Series Products
- » Each Link can receive inputs from multiple meters and other peripheral devices, making the Link a cost-effective choice over conventional AMI
- » Provides customer access to water use data through Subeca Engage App or Portal, to monitor and manage without requiring staff field calls.

